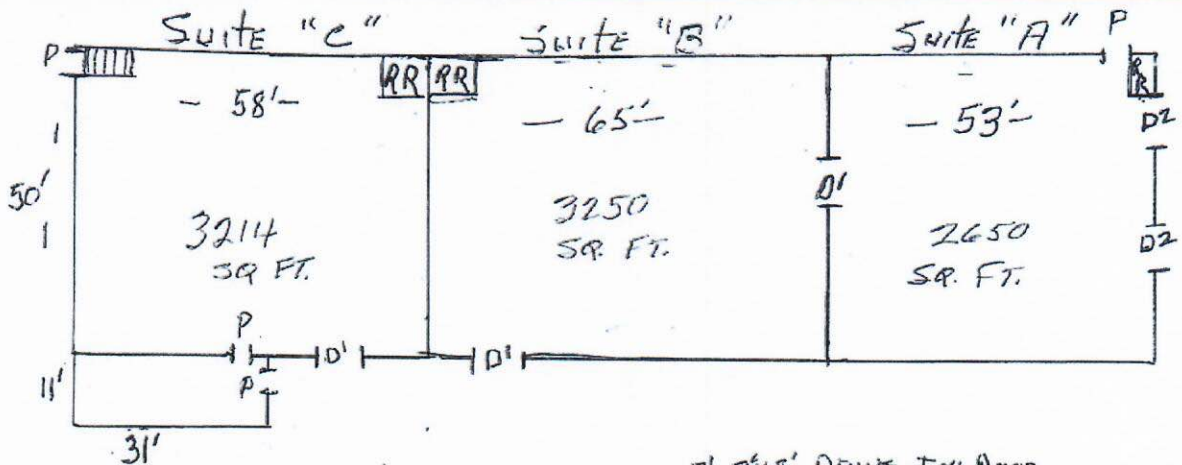




**817 W. WARD AVE., UNITS A & B
HIGH POINT, NC
FOR LEASE - \$2,400/MONTH
UTILITIES INCLUDED!**



D1 8'x8' DRIVE IN DOOR
D2 10'x14' DRIVE IN DOOR
P= PERSONNEL DOOR.
RR= REST ROOM



P.O. Box 1885, Jamestown, NC 27282

(O) 336.454.5427 (E-fax) 336.217.8372

Aerial Map



Municipal and/or County Jurisdiction: Guilford/ City of High Point	
Size "A" = 2,650 sq. ft. Total 5,900 Sq. Ft. "B" = 3,250 sq. ft.	Age: 1957
Acreage: 3.00 Access	Condition: Good
Office: 600 Sq. Ft.	Walls: Masonry
Ceiling Height: max. 25'	Floors: Concrete
min. 8"	Roof: Barrel with rubber membrane
Loading Dock(s):	Water: City of High Point
Dimensions:	Sewer: City of High Point
Drive-in Doors 3	Electric: Duke
Parking: 12	Gas: Piedmont Natural
Zoning: HI	Heat: Suspended gas fired unit heaters
Last Use: Garage	Sprinkler: Yes
Date Available: 7/15/19	Lighting: Fluorescent / LED